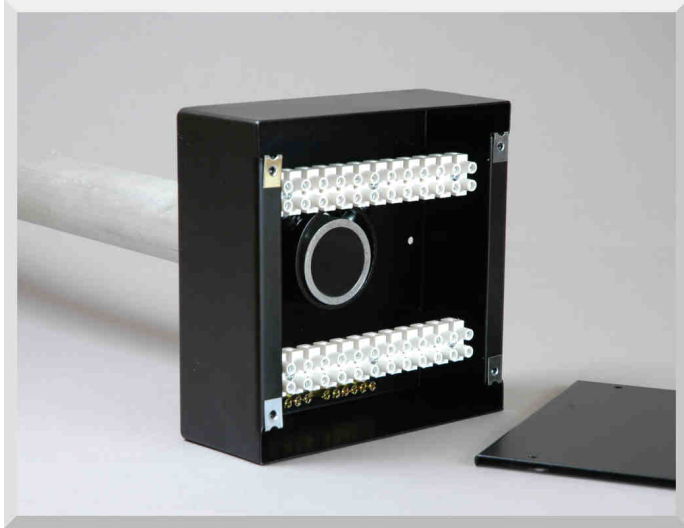




INNOVATIVE PRODUCTS FOR STAGE LIGHTING

End Box for Internally Wired Lighting Bars



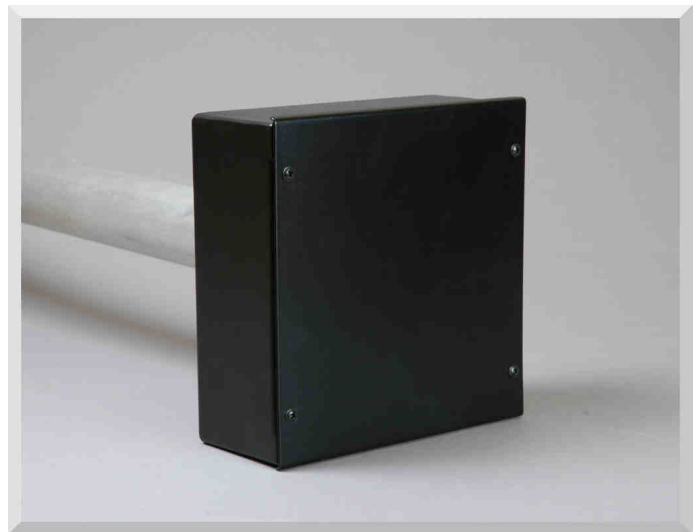
The Robolights End Box is designed to be fitted to the end of an internally wired lighting bar (IWB) providing a neat termination box where the circuits of the IWB can connect with fixed wiring or multi-core cables.

Designed to fit to 'standard' 48mm aluminium scaffold tubing using its own internal tube clamp, the End Box is supplied with all necessary fittings and terminals to connect up to 12* individual circuits. The End Box is manufactured from mild steel and is finished in durable, satin black powder coat paint.

*An additional 6 way terminal kit can be fitted to allow up to 18 circuits in total.

End Box Features

- Mild steel construction
- Compact size - 180 x 180 x 72mm
- Durable powder coat finish
- Built in scaffold tube clamp
- Supplied complete with terminals for up to 12 circuits
- Additional 6 way terminal set available
- Earth terminal bar
- Individually packed with full fitting instructions

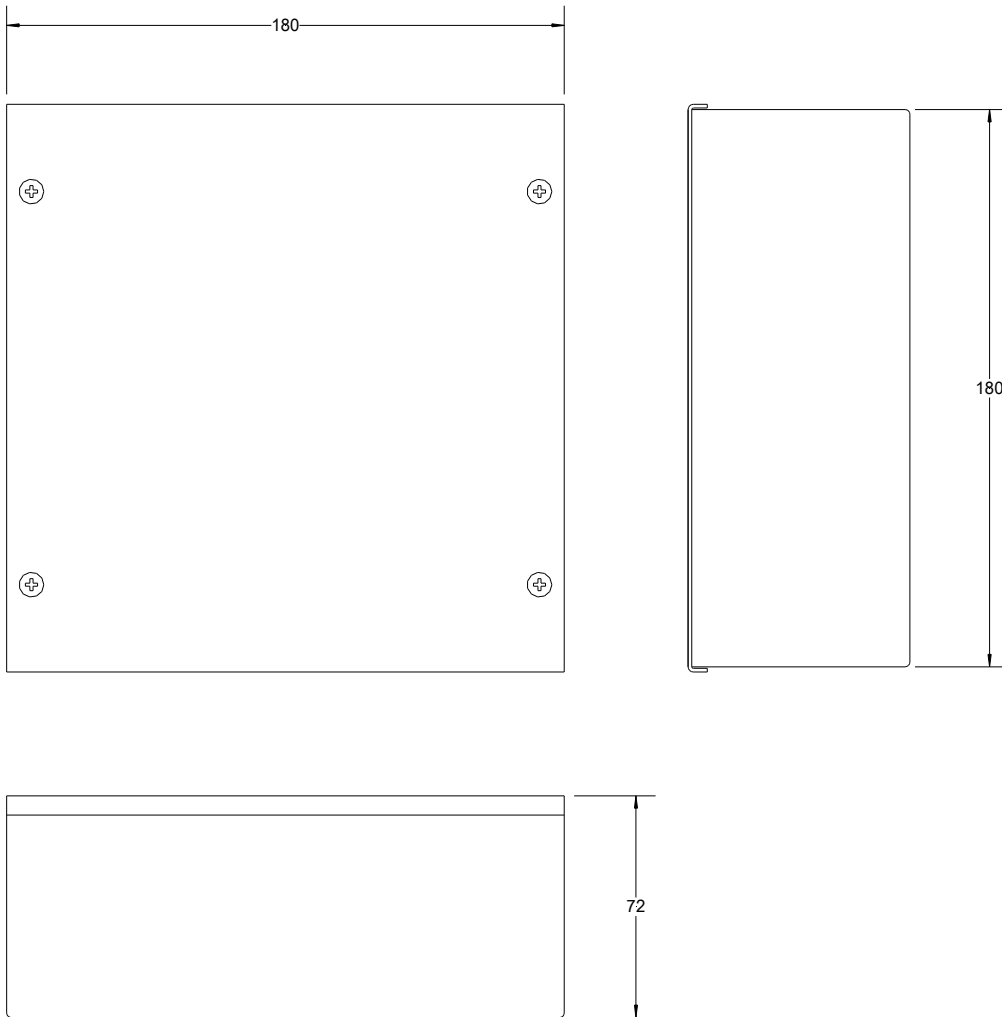


End Box Technical Information

Enclosure material:	18 SWG mild steel
Dimensions:	180mm x 180mm x 72mm
Weight:	1.6kg (complete)
Tube Clamp:	Accepts 48.3mm OD tube
L&N terminal rating:	380VAC, 20A
L&N terminal cable capacity	6mm CSA
L&N terminal material:	Brass with steel screws
Earth terminal bar cable capacity:	1 x 25mm (max) and 8 x 16mm (max) CSA



End Box Dimensions



All connectors are fully RoHS Compliant.



The Smart Socket is manufactured in the UK.

IMPORTANT: The Robolights End Box should only be installed by a suitably qualified person. The installer must also ensure that the final assembly conforms to and is in accordance with, all regional electrical wiring regulations prevailing at any time.

Certain features and functions of Robolights products are protected by Patent Law. Smart Clamp, Smart Socket and the Robolights logo are registered trademarks and remain the sole property of Robolights Ltd. As such they may not be reproduced in any form without the prior express written consent of Robolights Ltd.

Copyright © Robolights Ltd. - All rights reserved.

www.robolights.co.uk email: sales@robolights.co.uk
PO Box 62, Wellington, TA21 9YQ England
Telephone: +44 (0) 1823 669566 fax: +44 (0) 1823 662235

Robolights Limited. Registered in England. No. 4392931. Registered Office. 3 Blueft Road, Wellington, TA21 9AU England